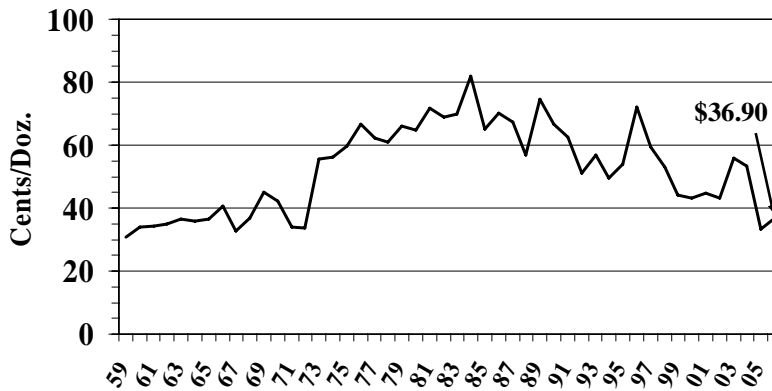
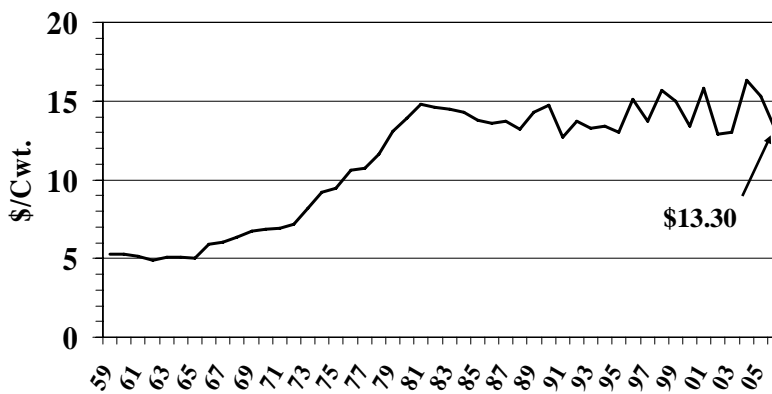


Texas Market Egg Prices Prices Received 1959 - 2006



2006 Preliminary
Note: Prices Received by Farmers

Texas Milk (Wholesale) Prices Prices Received 1959 - 2006



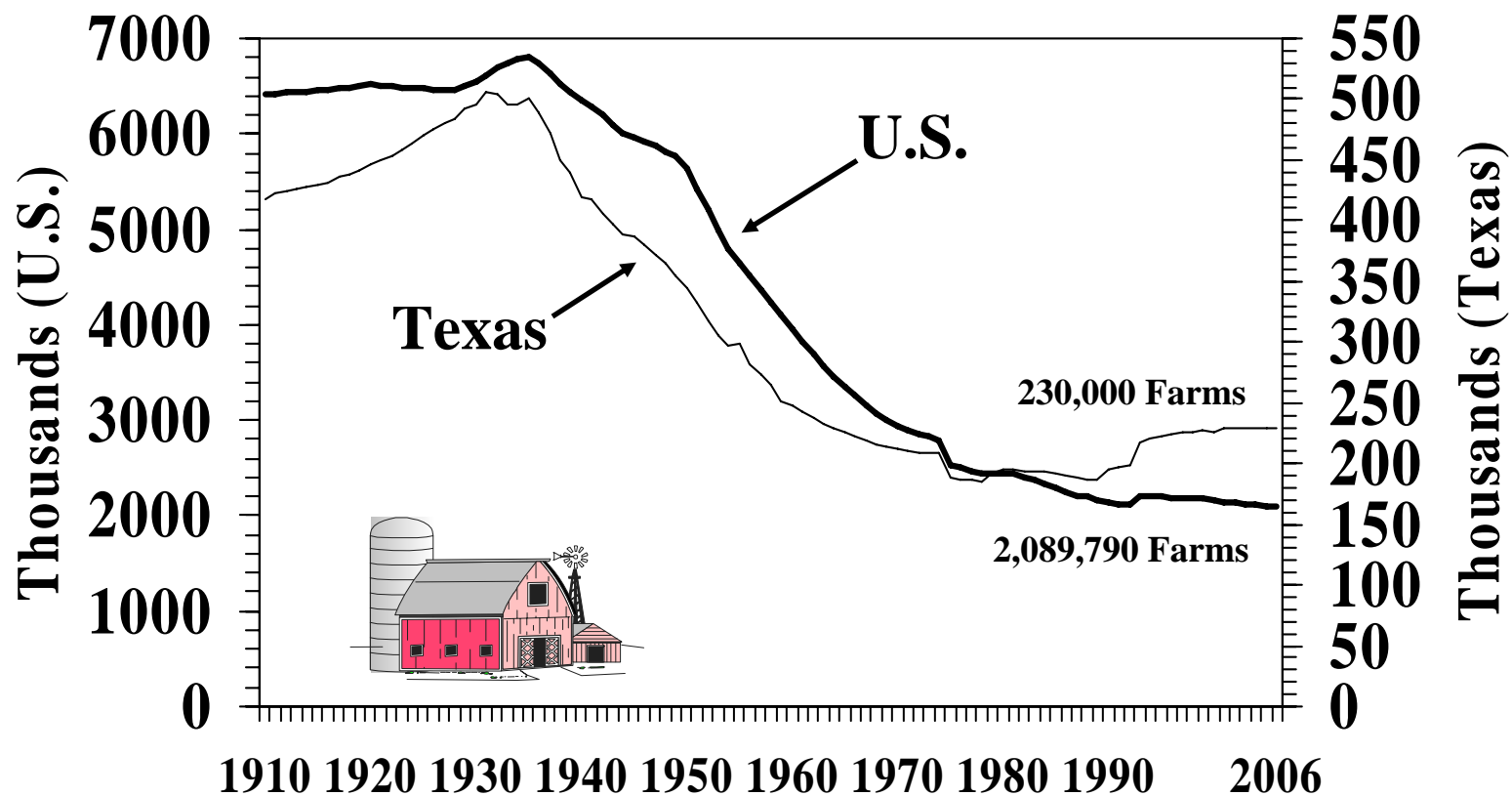
2006 Preliminary
Note: Prices Received by Farmers

Texas and United States Number of Farms, 1910 - 2006
(1,000)

Texas				U.S.			
Year	Farms	Year	Farms	Year	Farms	Year	Farms
1910	418	1960	247	1910	6,406	1960	3,963
1911	422	1961	242	1911	6,425	1961	3,825
1912	424	1962	237	1912	6,430	1962	3,692
1913	426	1963	233	1913	6,437	1963	3,572
1914	428	1964	230	1914	6,447	1964	3,457
1915	430	1965	226	1915	6,458	1965	3,356
1916	432	1966	222	1916	6,463	1966	3,257
1917	436	1967	219	1917	6,478	1967	3,162
1918	438	1968	216	1918	6,488	1968	3,071
1919	442	1969	214	1919	6,506	1969	3,000
1920	446	1970	212	1920	6,518	1970	2,949
1921	450	1971	210	1921	6,511	1971	2,902
1922	454	1972	209	1922	6,500	1972	2,860
1923	458	1973	209	1923	6,492	1973	2,823
1924	464	1974	209	1924	6,480	1974	2,795
1925	470	1975	189	1925	6,471	1975	2,521
1926	476	1976	187	1926	6,462	1976	2,497
1927	481	1977	186	1927	6,458	1977	2,456
1928	484	1978	185	1928	6,470	1978	2,436
1929	492	1979	192	1929	6,512	1979	2,437
1930	496	1980	196	1930	6,546	1980	2,440
1931	506	1981	195	1931	6,609	1981	2,440
1932	504	1982	194	1932	6,687	1982	2,407
1933	496	1983	194	1933	6,741	1983	2,379
1934	496	1984	194	1934	6,776	1984	2,334
1935	501	1985	192	1935	6,814	1985	2,293
1936	489	1986	190	1936	6,739	1986	2,250
1937	472	1987	188	1937	6,636	1987	2,213
1938	449	1988	187	1938	6,527	1988	2,197
1939	440	1989	186	1939	6,441	1989	2,171
1940	420	1990	196	1940	6,350	1990	2,146
1941	418	1991	197	1941	6,293	1991	2,117
1942	406	1992	198	1942	6,202	1992	2,108
1943	397	1993	218	1943	6,089	1993	2,202
1944	389	1994	220	1944	6,003	1994	2,198
1945	387	1995	222	1945	5,967	1995	2,196
1946	380	1996	224	1946	5,926	1996	2,191
1947	372	1997	225	1947	5,871	1997	2,191
1948	365	1998	226	1948	5,803	1998	2,192
1949	355	1999	227	1949	5,772	1999	2,187
1950	345	2000	226	1950	5,648	2000	2,167
1951	332	2001	229	1951	5,428	2001	2,149
1952	318	2002	229	1952	5,198	2002	2,135
1953	305	2003	229	1953	4,984	2003	2,127
1954	297	2004	229	1954	4,798	2004	2,113
1955	298	2005	230	1955	4,654	2005	2,099
1956	281	2006	230	1956	4,514	2006	2,090
1957	273			1957	4,372		
1958	265			1958	4,233		
1959	252			1959	4,105		

Source: TDA/USDA, "1966-1989 Texas Historical Crops Statistics", compiled by Texas Agricultural Statistics Service, August 1991, USDA; "Texas Ag Facts", USDA/TASS; "Farm Numbers and Land in Farms", USDA/NASS, various years.

Texas and U.S. Number of Farms, 1910 - 2006



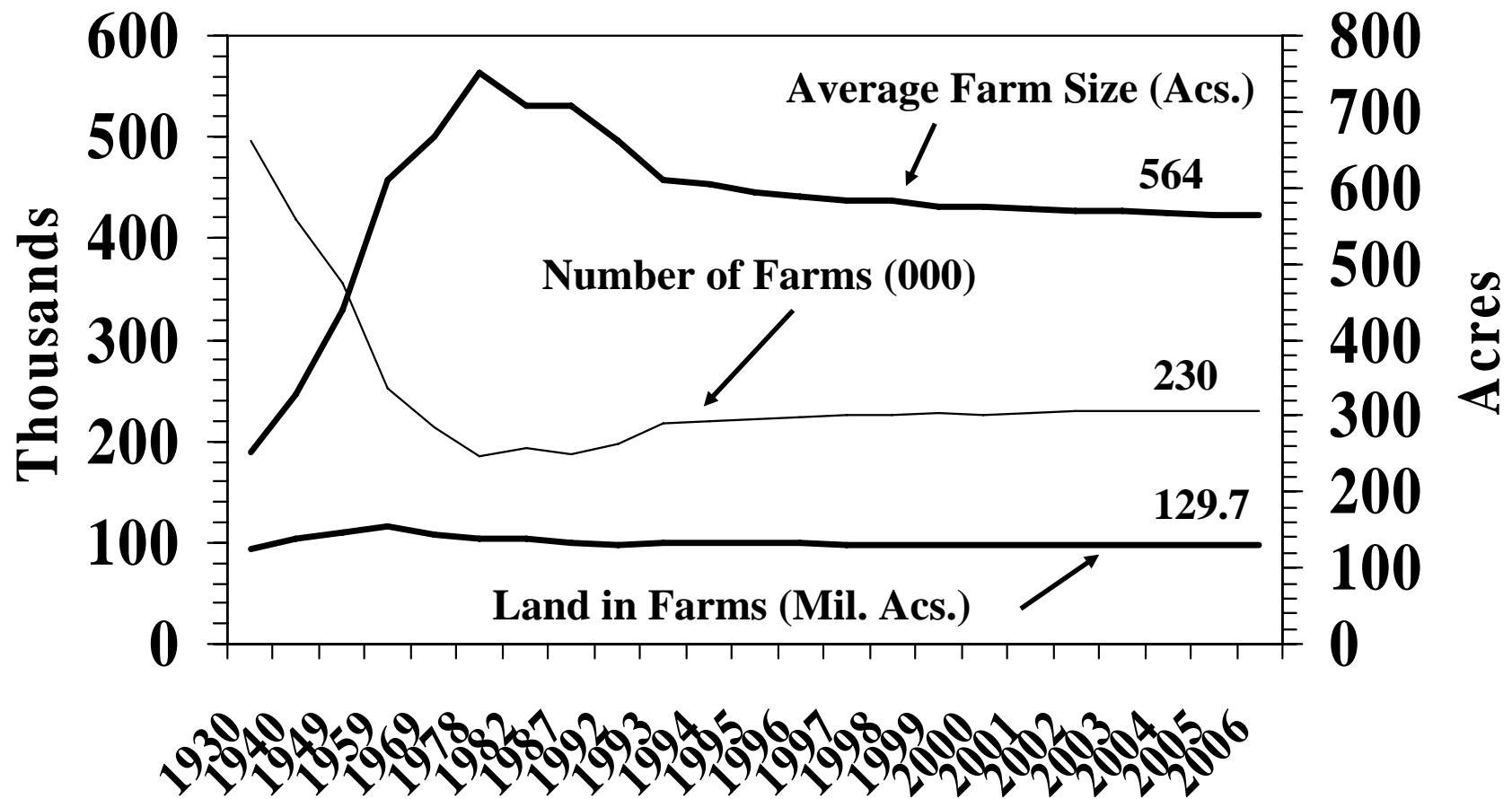
Historical Overview of the Number of Farms and Farm Size in Texas

Variable	2006	2005	2004	2003	2002	2001	2000	1999	1998	1997	1996	1995	1994
Number of farms	230,000	230,000	229,000	229,000	229,000	228,600	226,000	227,000	226,000	225,000	224,000	222,000	220,000
Land in farms (000 acres)	129,700	129,800	130,000	130,500	130,500	130,700	130,000	130,500	131,500	131,500	132,000	132,000	133,000
Average farm size (acs)	564	564	568	570	570	572	575	575	582	584	589	595	605
Number of Farms by Size in Acres:													
1-49	--	--	--	--	74,654	--	--	--	--	53,545	--	--	--
50-179	--	--	--	--	70,729	--	--	--	--	59,420	--	--	--
180-499	--	--	--	--	42,463	--	--	--	--	39,674	--	--	--
500-999	--	--	--	--	18,534	--	--	--	--	18,495	--	--	--
1,000 or more	--	--	--	--	22,447	--	--	--	--	23,167	--	--	--

Variable	1993	1992	1987	1982	1978	1969	1959	1949	1940	1930
Number of farms	218,000	198,000	188,000	194,000	185,000	213,550	252,000	355,000	420,000	496,000
Land in farms (000 acres)	133,000	130,000	133,200	137,200	139,000	142,567	154,000	145,389	137,683	124,707
Average farm size (acs)	610	661	709	707	751	668	611	439	329	252
Number of Farms by Size in Acres:										
1-49	--	45,636	49,833	44,572	30,478	38,105	45,392	91,444	126,566	166,768
50-179	--	54,214	57,666	58,198	56,742	69,574	76,185	126,583	183,716	232,413
180-499	--	38,602	39,143	40,246	43,356	56,667	61,720	73,815	74,336	70,096
500-999	--	18,800	19,327	19,962	21,760	26,199	23,668	21,399	18,283	14,331
1,000 or more	--	23,392	22,819	22,042	23,059	23,005	20,106	18,175	15,101	11,881

Source: Don E. Albrecht. "The Changing Texas Agriculture: An Overview of the 1987 Census of Agriculture", Departmental Technical Report No. 90-2, Department of Rural Sociology, TAES, The Texas A&M University System, College Station, Texas, 1990. Number of Farms and Land in Farms, USDA publication, February 2007. "1997 and 2002 Census of Agriculture" Highlights of Agriculture, 1999. NOTE: Number of Farms by Size in Acres Data Not Available for 1993-1996, 1998-2001, 2003-2006. 2006 numbers preliminary.

Historical Overview of the Number of Farms, Land in Farms, and Average Farm Size in Texas, 1930 - 2006

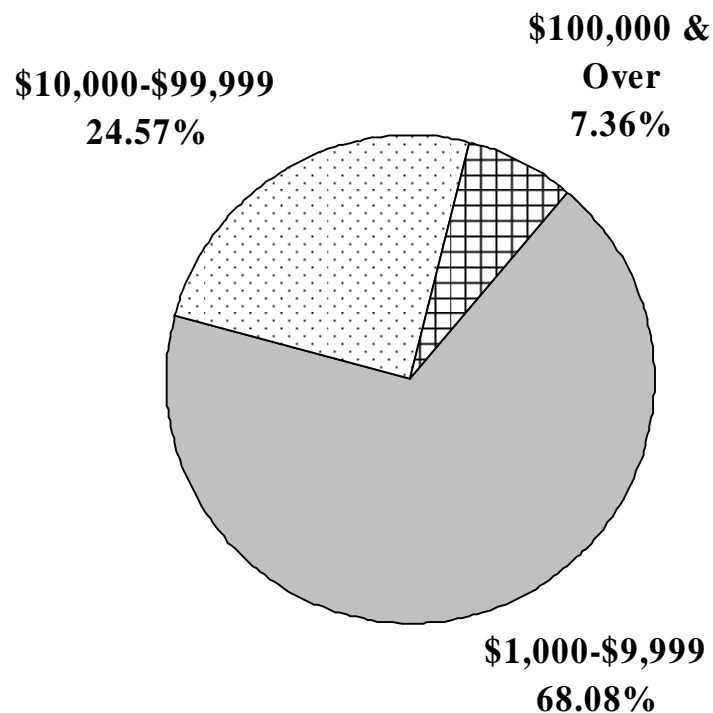


**Texas: Number of Farms and Land in Farms
by Economic Sales Class**

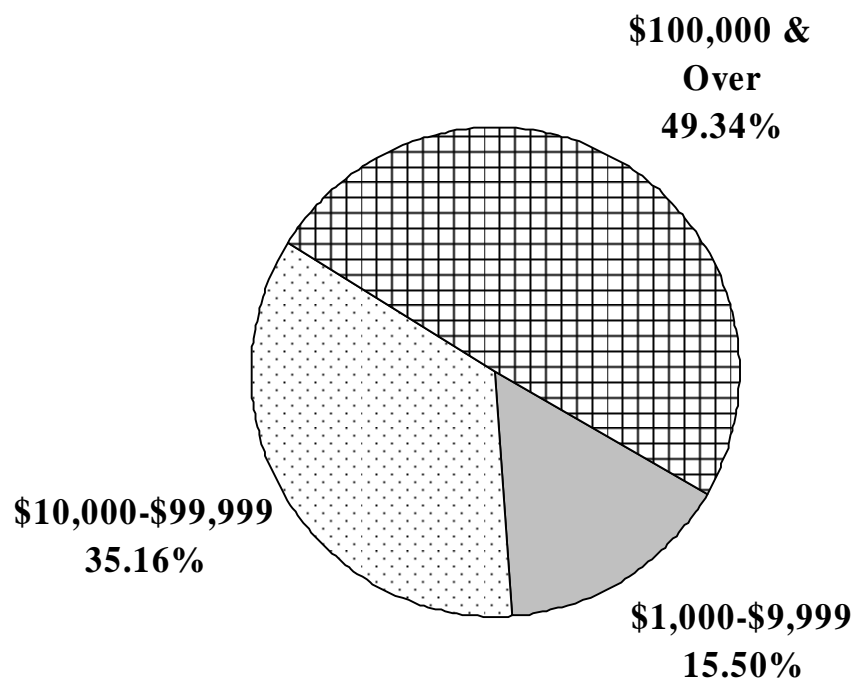
Economic Sales Class	Number of Farms	Percent of Total Farms	Land in Farms	Percent of Total Land
	Number	%	(000 acres)	%
2006				
\$1,000-\$9,999	156,600	68.09	20,100	15.50
\$10,000-\$99,999	56,500	24.57	45,600	35.16
\$100,000-\$249,999	8,200	3.57	23,500	18.12
\$250,000-\$499,999	4,800	2.09	16,800	12.95
\$500,000 & Over	3,900	1.70	23,700	18.27
Total	230,000	100.00	129,700	100.00
2005				
\$1,000-\$9,999	157,000	68.26	20,600	15.87
\$10,000-\$99,999	56,600	24.61	46,000	35.44
\$100,000-\$249,999	8,200	3.57	23,500	18.10
\$250,000-\$499,999	4,500	1.96	16,100	12.40
\$500,000 & Over	3,700	1.61	23,600	18.18
Total	230,000	100.00	129,800	100.00
2004				
\$1,000-\$9,999	156,500	68.34	20,700	15.92
\$10,000-\$99,999	56,500	24.67	46,400	35.69
\$100,000-\$249,999	8,000	3.49	23,600	18.15
\$250,000-\$499,999	4,400	1.92	16,100	12.38
\$500,000 & over	3,600	1.57	23,200	17.85
Total	229,000	100.00	130,000	100.00

Source: USDA, "Farm Numbers and Land in Farms, February 2007."
Some numbers may not add due to rounding.

Number of Farms and Land in Farms by Farm Sales Categories in Texas, 2006 (% Distribution)



Number of Farms (%)



Land in Farms (%)

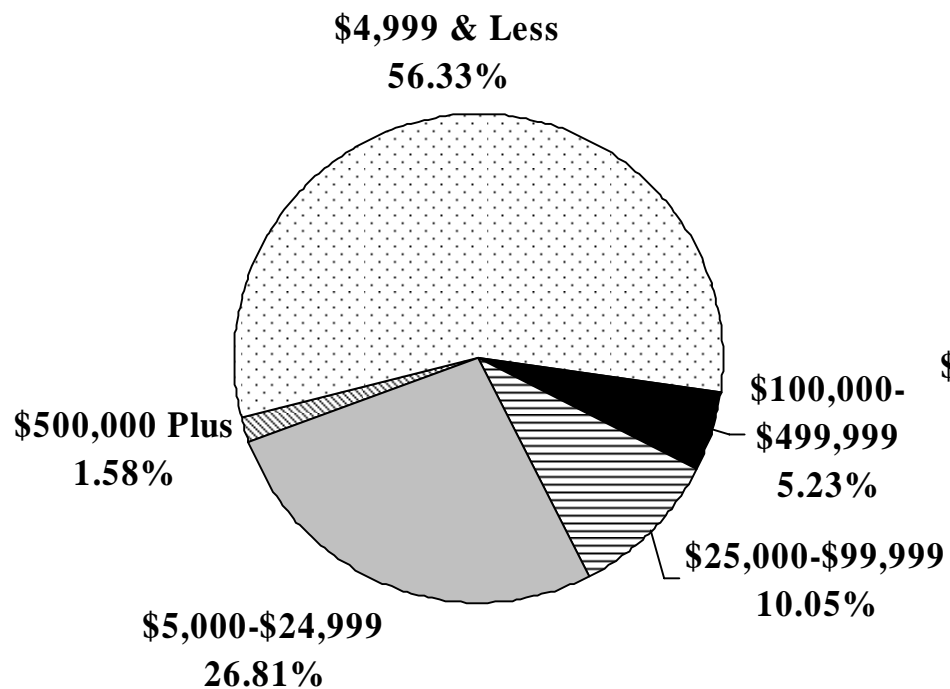
**Number of Farms and Total Farm Sales by
Farm Sales Categories in Texas, 2002**

Total Farm Sales Categories	Number of Farms	Total Sales (\$1,000)	Percent of Farms	Percent of Total Sales
Less than \$2,499	94,906	147,182	41.46	1.00
\$2,500 to \$4,999	34,041	121,461	14.87	0.83
\$5,000 to \$9,999	31,076	216,350	13.57	1.48
\$10,000 to \$24,999	30,299	472,098	13.23	3.22
\$25,000 to \$49,999	13,888	495,418	6.07	3.38
\$50,000 to \$99,999	9,125	670,061	3.99	4.57
\$100,000 to \$249,999 ..	7,816	1,296,407	3.41	8.84
\$250,000 to \$499,999 ..	4,159	1,431,611	1.82	9.76
\$500,000 or more	3,616	9,813,136	1.58	66.92
TOTAL	228,926	14,663,724	100.00	100.00

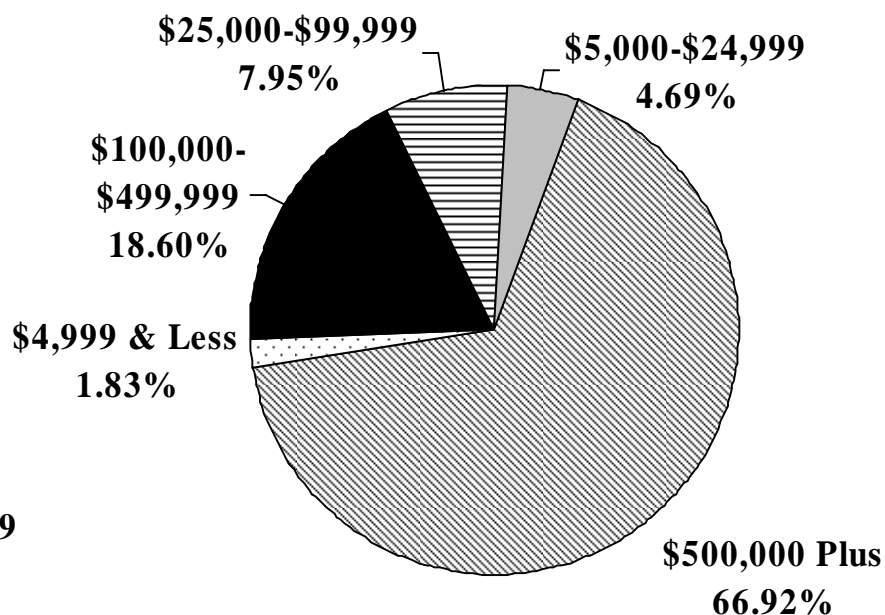
SOURCE: 2002 Census of Agriculture, Vol. 1, Geographic Area Series, Part 43A - Texas State and County Data, USDA/ESA/Bureau of the Census - 2002.

Numbers may not add due to rounding. Total farms in Census less than reported by Texas Agricultural Statistical Service because of omissions in Census data.

Number of Farms and Total Farm Sales by Farm Sales Categories in Texas, 2002 (% Distribution)



Number of Farms (%)
228,926 Farms



Total Farm Sales (%)
\$14.66 Billion Total Sales

Historical Overview of the Number of Farms and Farm Size in the United States

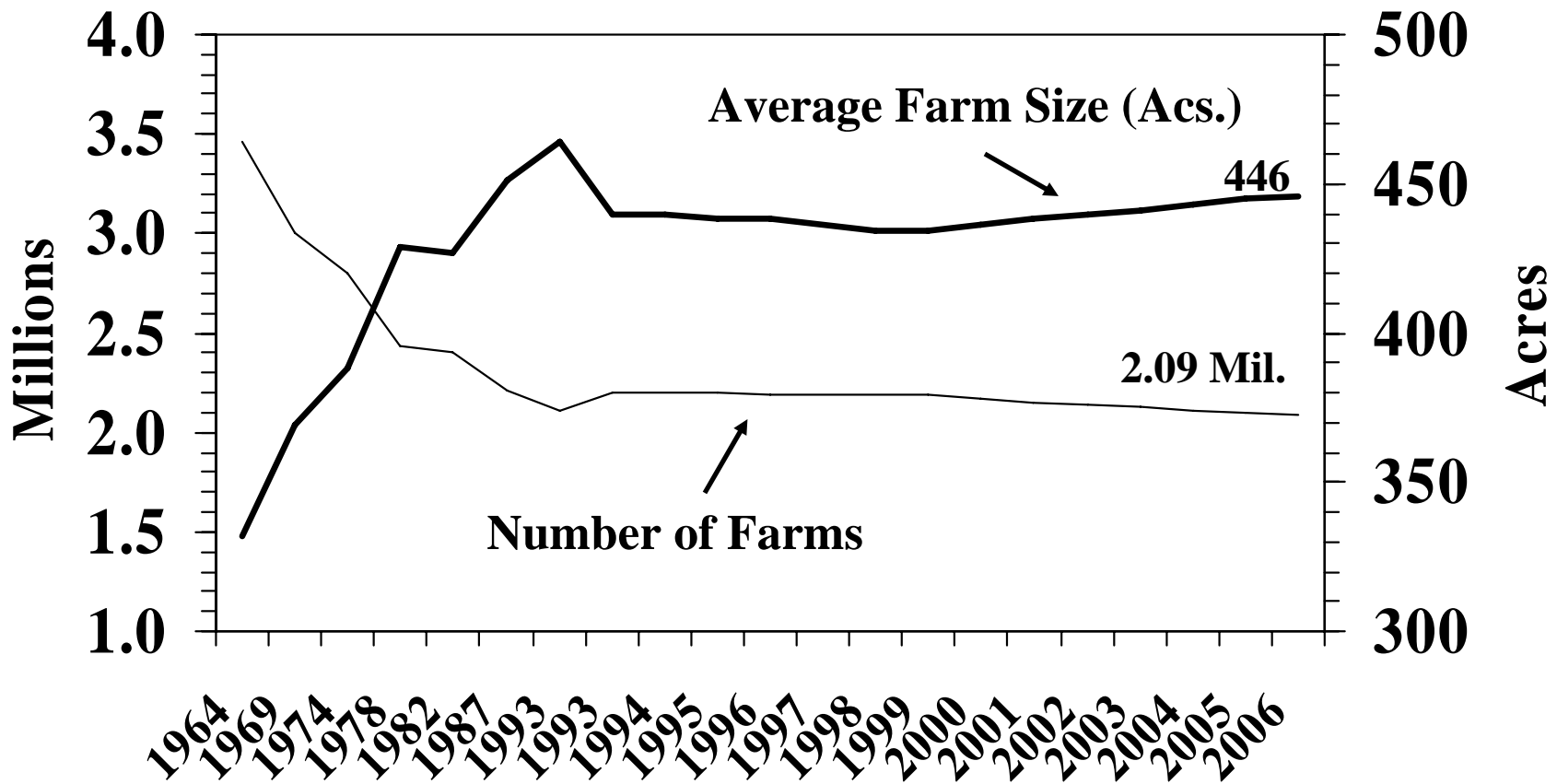
Variable	2006	2005	2004	2003	2002	2001	2000	1999	1998	1997	1996	1995
Number of farms	2,089,790	2,098,690	2,112,970	2,126,860	2,135,360	2,148,630	2,166,780	2,187,280	2,192,330	2,190,510	2,190,500	2,196,400
Land in farms (000 acres)	932,430	933,210	936,295	938,650	940,300	942,070	945,080	948,460	952,080	956,010	958,675	962,515
Average farm size (acs)	446	445	443	441	440	438	436	434	434	436	438	438
Number of Farms by Size in Acres:												
1-49	--	--	--	--	742,036	--	--	--	--	564,348	--	--
50-179	--	--	--	--	658,804	--	--	--	--	592,972	--	--
180-499	--	--	--	--	389,442	--	--	--	--	402,769	--	--
500-999	--	--	--	--	161,879	--	--	--	--	175,690	--	--
1,000 or more	--	--	--	--	87,065	--	--	--	--	176,080	--	--

Variable	1994	1993	1992	1987	1982	1978	1974	1969	1964
Number of farms	2,197,690	2,201,590	2,107,840	2,213,000	2,407,000	2,436,000	2,795,000	3,000,000	3,457,000
Land in farms (acres)	965,935	968,845,000	978,503,000	998,923,000	1,027,795,000	1,044,790,000	1,084,433,000	1,107,811,000	1,146,106,000
Average farm size (acs)	440	440	464	451	427	429	388	369	332
Number of Farms by Size in Acres:									
1-49	--	--	554,207	595,694	636,917	542,787	507,797	635,576	820,015
50-179	--	--	584,146	644,849	711,652	759,047	827,884	1,001,706	1,175,370
180-499	--	--	427,648	478,294	526,510	581,631	616,098	726,363	806,743
500-999	--	--	186,387	200,058	203,925	213,209	207,297	215,659	210,437
1,000 or more	--	--	172,912	168,864	161,972	161,101	154,937	150,946	145,292

Source: Don E. Albrecht. "The Changing Texas Agriculture: An Overview of the 1987 Census of Agriculture", Departmental Technical Report No. 90-2, Department of Rural Sociology, TAES, The Texas A&M University System, College Station, Texas, 1990. Number of Farms and Land in Farms, USDA publication, February 2007.

"2002 Census of Agriculture" Highlights of Agriculture for United States. NOTE: Number of Farms by Size in Acres Data Not Available for 1993-1996, 1998-2001, 2003-2006. 2006 numbers preliminary.

Historical Overview of the Number of Farms and Average Farm Size in the United States 1964 - 2006



**U.S.: Number of Farms and Land in Farms
by Economic Sales Class**

Economic Sales Class	Number of Farms	Percent of Total Farms	Land in Farms	Percent of Total Land
	Number	%	(000 acres)	%
2006				
\$1,000-\$9,999	1,153,910	55.22	114,685	12.30
\$10,000-\$99,999	597,350	28.58	258,890	27.77
\$100,000-\$249,000	166,220	7.95	191,350	20.52
\$250,000-\$499,999	90,960	4.35	154,080	16.52
\$500,000 & Over	81,350	3.89	213,425	22.89
Total	2,089,790	100.00	932,430	100.00
2005				
\$1,000-\$9,999	1,166,320	55.57	118,200	12.67
\$10,000-\$99,999	596,040	28.40	260,665	27.93
\$100,000-\$249,000	167,080	7.96	192,295	20.61
\$250,000-\$499,999	89,840	4.28	152,195	16.31
\$500,000 & Over	79,410	3.78	209,855	22.49
Total	2,098,690	100.00	933,210	100.00
2004				
\$1,000-\$9,999	1,181,190	55.90	120,890	12.91
\$10,000-\$99,999	599,280	28.36	266,600	28.47
\$100,000-\$249,000	167,030	7.90	193,665	20.68
\$250,000-\$499,999	88,980	4.21	151,375	16.17
\$500,000 & Over	76,490	3.62	203,765	21.76
Total	2,112,970	100.00	936,295	100.00

Source: USDA, "Farm Numbers and Land in Farms, February 2007."
Numbers may not add due to rounding.