

TEXAS CROPS



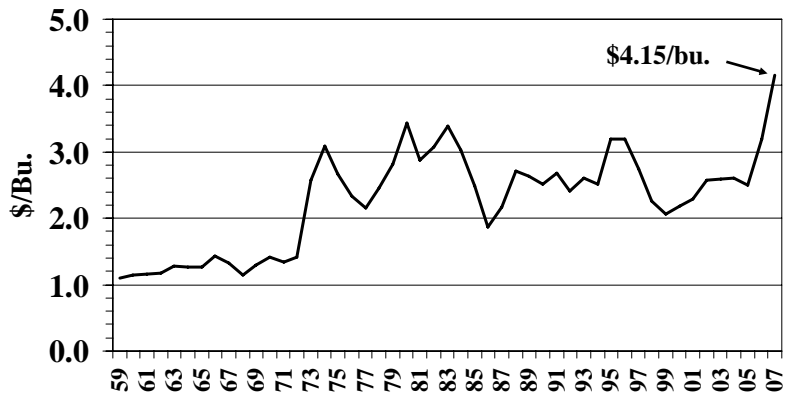
Front of a general store in a small cotton town in Texas, June 1937

Texas Marketing Year Average Prices Received by Farmers, Crops, 1961 - 2007

Year	All Corn	Upland Cotton	All Hay	Oats	Peanuts	Rice	Grain Sorghum	Wheat
	\$/bu.	¢/lb.	\$/ton	\$/bu.	¢/lb.	\$/cwt.	\$/cwt.	\$/bu.
1961	1.16	29.80	22.10	0.69	10.40	5.31	1.68	1.80
1962	1.17	30.50	22.90	0.76	10.60	5.03	1.72	2.08
1963	1.28	30.70	27.00	0.81	10.80	5.09	1.81	1.91
1964	1.26	28.70	24.60	0.73	10.90	4.94	1.92	1.53
1965	1.27	27.10	22.30	0.71	11.00	5.04	1.77	1.34
1966	1.43	17.60	22.50	0.75	11.00	5.13	1.84	1.66
1967	1.32	20.40	25.00	0.82	11.20	4.94	1.81	1.46
1968	1.15	20.20	23.50	0.74	11.70	4.97	1.73	1.26
1969	1.29	19.30	25.50	0.68	11.90	4.88	1.95	1.25
1970	1.42	20.60	26.50	0.70	12.20	5.25	2.14	1.30
1971	1.34	26.60	30.00	0.85	12.80	5.35	2.00	1.45
1972	1.42	23.00	29.00	0.85	13.60	6.44	2.55	1.56
1973	2.57	46.00	35.50	1.12	15.90	14.80	3.89	3.04
1974	3.09	34.90	47.00	1.48	17.20	10.90	4.78	3.87
1975	2.66	45.80	47.00	1.51	18.60	8.81	4.28	3.38
1976	2.33	61.60	49.00	1.64	18.90	7.21	3.68	3.04
1977	2.16	49.70	49.00	1.23	19.60	9.55	3.42	2.15
1978	2.45	53.70	53.50	1.30	20.20	9.27	3.86	2.93
1979	2.82	56.46	53.50	1.55	20.90	11.60	4.55	3.86
1980	3.44	68.40	65.50	1.84	35.10	12.80	5.61	3.74
1981	2.88	50.12	63.00	1.97	26.50	10.40	4.44	3.65
1982	3.07	52.27	72.50	2.12	25.60	8.94	4.42	3.42
1983	3.39	62.61	77.50	1.78	25.30	9.97	5.20	3.38
1984	3.03	54.24	96.00	2.16	25.90	8.90	4.64	3.39
1985	2.49	51.46	68.00	1.97	25.50	7.38	3.93	2.97
1986	1.87	47.56	60.00	1.65	29.60	4.22	2.86	2.32
1987	2.17	58.73	65.00	2.00	27.00	8.07	3.18	2.36
1988	2.71	51.39	74.00	2.42	26.80	7.24	4.49	3.39
1989	2.63	59.19	75.00	2.06	28.20	8.02	3.93	3.79
1990	2.51	63.65	67.50	1.51	41.90	7.41	4.15	2.74
1991	2.68	51.96	62.50	1.43	28.00	8.15	4.34	2.69
1992	2.41	49.12	64.00	1.66	26.90	6.17	3.62	3.18
1993	2.61	55.09	68.00	1.59	29.60	7.60	4.46	2.86
1994	2.51	70.10	69.00	1.83	28.50	7.12	4.05	3.22
1995	3.19	74.63	72.00	2.19	28.70	9.73	6.06	4.19
1996	3.19	66.35	98.00	3.43	24.80	10.80	4.83	4.98
1997	2.74	62.86	72.00	2.36	24.30	10.90	4.25	3.25
1998	2.26	57.05	89.00	1.44	24.60	9.32	3.56	2.66
1999	2.07	42.24	71.50	1.54	20.60	6.04	3.08	2.28
2000	2.18	45.90	76.00	1.60	24.60	5.82	3.28	2.52
2001	2.29	28.40	75.00	2.20	22.60	4.61	3.64	2.78
2002	2.57	40.00	77.00	1.72	18.20	4.16	4.18	3.02
2003	2.59	57.70	74.00	2.20	19.50	7.35	4.10	3.05
2004	2.60	40.20	77.00	1.91	19.20	7.96	4.35	3.40
2005	2.50	45.00	92.00	2.35	18.00	7.77	3.85	3.30
2006	3.20	46.60	131.00	2.43	18.70	10.00	5.24	4.47
2007***	4.15	57.30	142.00	3.45	22.60	11.30	6.75	6.30

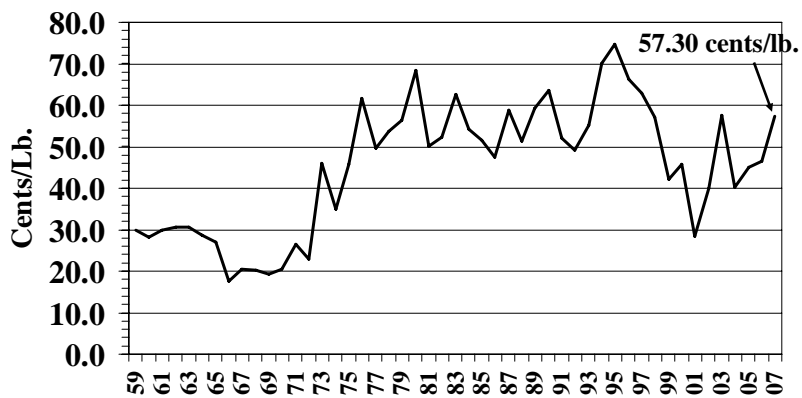
Source: Texas Ag Facts, Annual Summary, various issues in February; Texas Ag Statistics, Annual Summary, USDA/TASS, Austin. Numbers revised from USDA/NASS/Quick Stats Program. **After 1988 all hay market year average price cannot be derived from value and production. ***Preliminary

Texas Corn for Grain Prices Prices Received 1959 - 2007



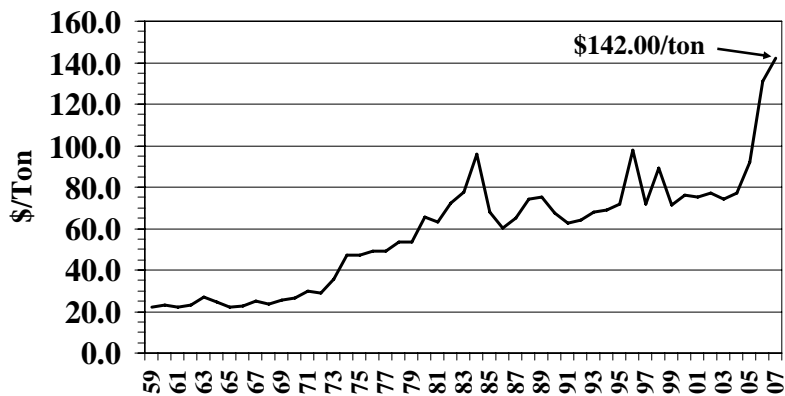
2007 Preliminary
Note: Prices Received by Farmers

Texas Upland Cotton Prices Prices Received 1959 - 2007



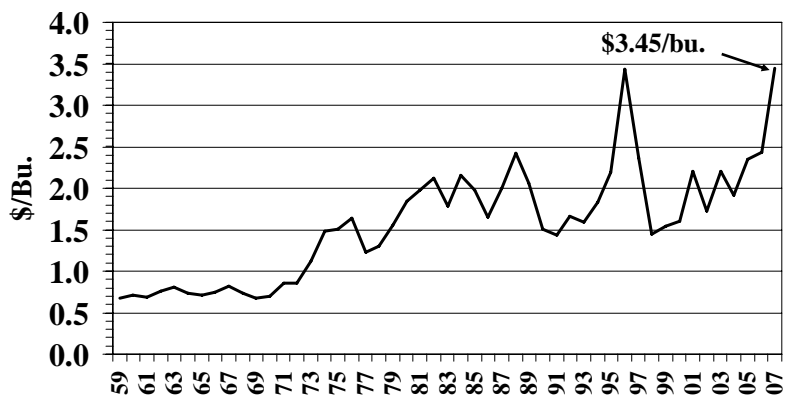
2007 Preliminary
Note: Prices Received by Farmers

Texas All Hay Prices Prices Received 1959 - 2007



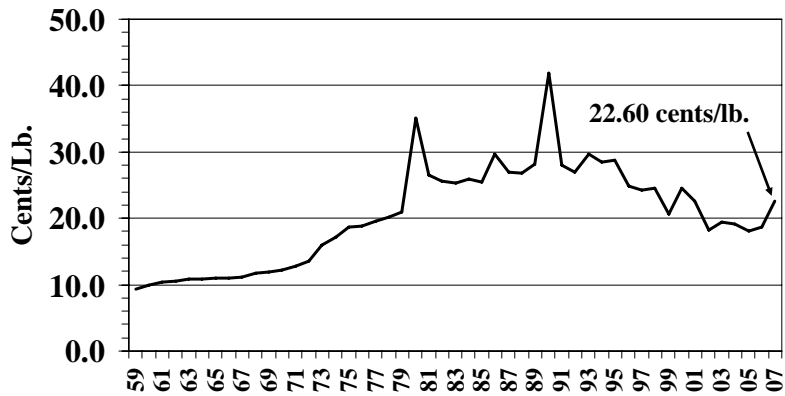
2007 Preliminary
Note: Prices Received by Farmers

Texas Oat Prices Prices Received 1959 - 2007



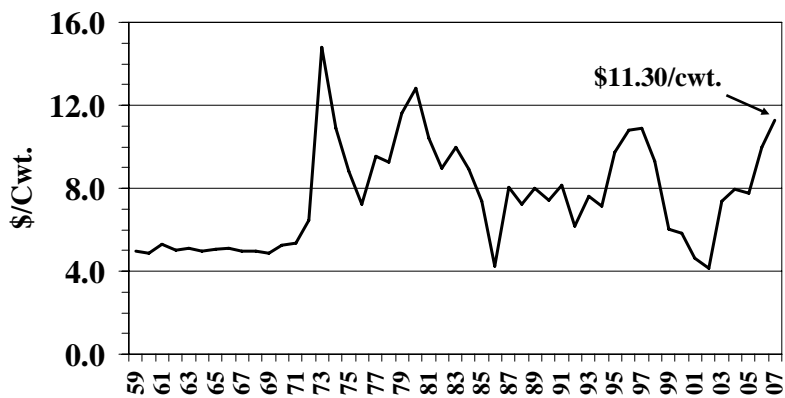
2007 Preliminary
Note: Prices Received by Farmers

Texas Peanut Prices Prices Received 1959 - 2007



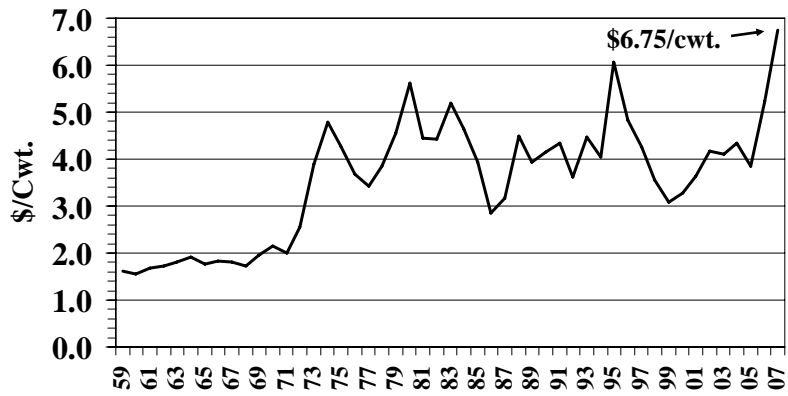
2007 Preliminary
Note: Prices Received by Farmers

Texas Rice Prices Prices Received 1959 - 2007



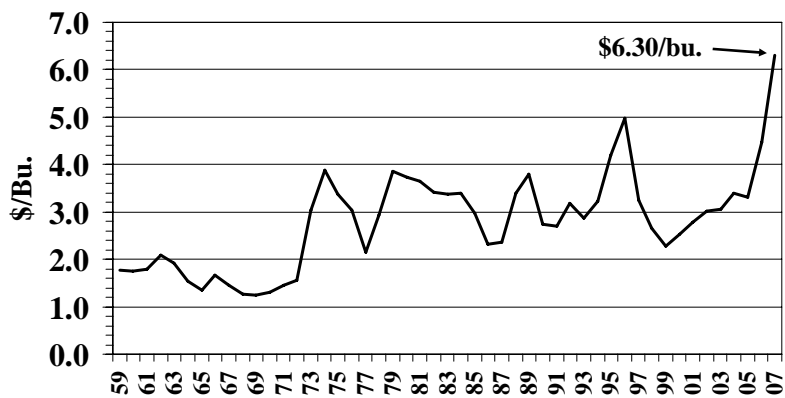
2007 Preliminary
Note: Prices Received by Farmers

Texas Grain Sorghum Prices Prices Received 1959 - 2007



2007 Preliminary
Note: Prices Received by Farmers

Texas Wheat Prices Prices Received 1959 - 2007



2007 Preliminary
Note: Prices Received by Farmers

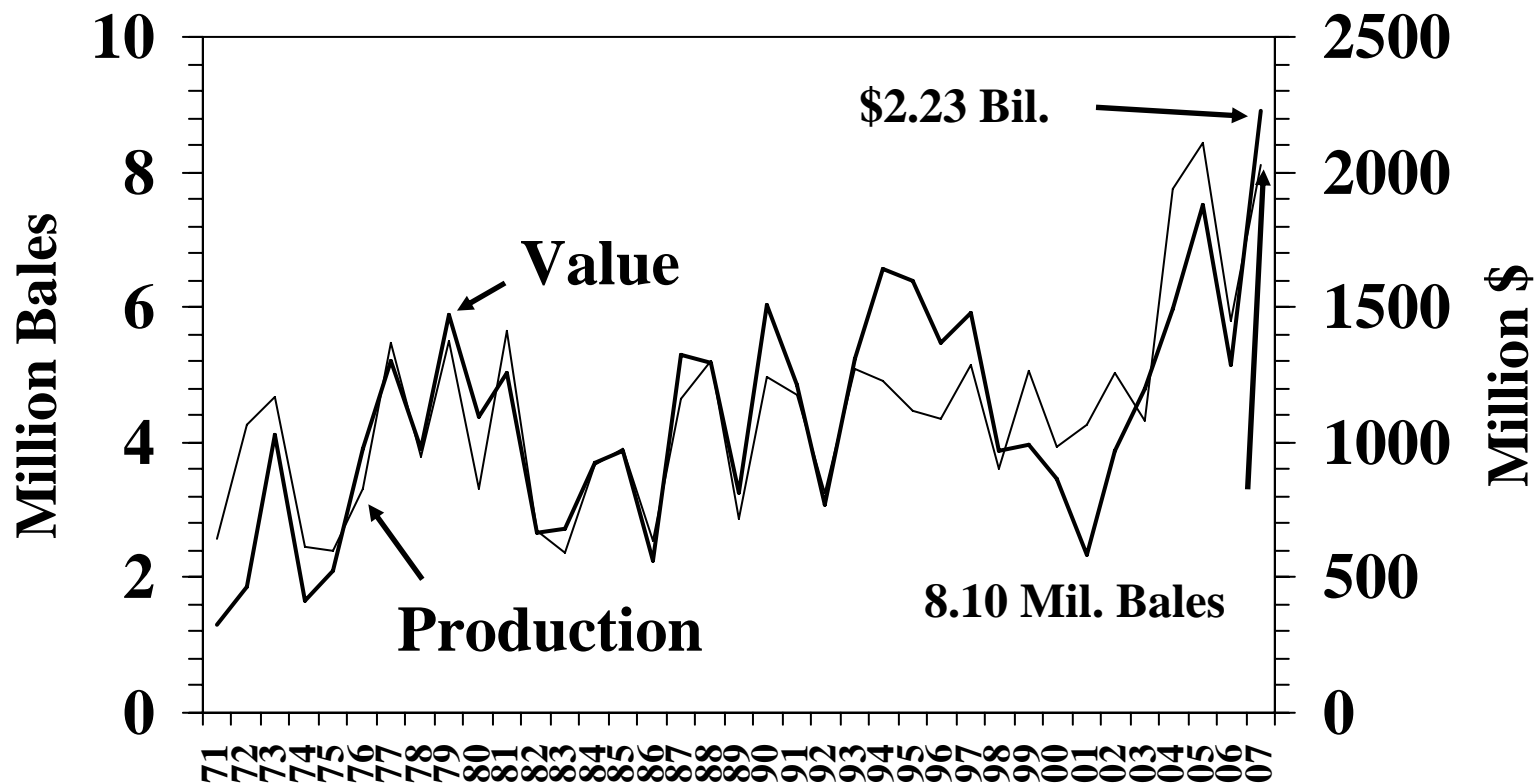
Value of Texas Upland Cotton and Cottonseed

The following table was compiled by Texas Cottonseed Crushers from their historical records and reports of the U.S. Department of Commerce and Department of Agriculture.

Crop Year	Upland Cotton		Cottonseed	
	Production	Value	Production	Value
	000 Bales	000 \$	000 Tons	000 \$
1971*	2,579	328,915	1,050	59,325
1972	4,246	468,758	1,643	79,850
1973	4,673	1,031,798	1,788	167,178
1974	2,462	412,434	981	116,739
1975	2,382	523,659	909	81,628
1976	3,307	977,814	1,271	124,558
1977	5,465	1,303,730	2,089	133,696
1978	3,792	977,426	1,483	166,069
1979	5,515	1,474,490	2,264	262,624
1980	3,320	1,091,616	1,361	161,959
1981	5,645	1,259,964	2,438	207,230
1982	2,700	664,848	1,122	90,882
1983	2,380	677,443	1,002	162,324
1984	3,680	927,360	1,563	157,863
1985	3,910	968,429	1,634	102,156
1986	2,535	560,945	1,053	82,118
1987	4,635	1,325,981	1,915	157,971
1988	5,215	1,291,651	2,131	238,672
1989	2,870	812,784	1,189	141,491
1990	4,965	1,506,182	1,943	225,388
1991	4,710	1,211,789	1,903	134,162
1992	3,265	769,495	1,346	145,368
1993	5,095	1,308,396	2,147	255,493
1994	4,915	1,642,003	2,111	215,322
1995	4,460	1,597,037	1,828	201,080
1996	4,345	1,368,154	1,784	230,136
1997	5,140	1,482,787	1,983	226,062
1998	3,600	969,408	1,558	204,098
1999	5,050	993,840	1,987	160,947
2000	3,940	868,061	1,589	162,078
2001	4,260	580,723	1,724	159,470
2002	5,040	967,680	1,855	191,065
2003	4,330	1,199,237	1,616	202,000
2004	7,740	1,493,510	2,895	301,080
2005	8,440	1,879,757	2,869	289,739
2006	5,800	1,288,992	2,066	243,776
2007	8,100	2,227,824	2,889	444,906

*Beginning in 1971, basis for cotton prices was changed from 500 pound gross weight to 480 pound net weight bale; to compute comparable prices for previous years multiply price times 1.04167. Source: "Texas Agricultural Facts", Crop Value Annual Summary, February 2007 and "Texas Ag Statistics", Texas Agricultural Statistics Service, Austin, Texas, annual summary. 2007 Based on marketings and monthly prices received August 1, 2007 - December 31, 2007.

Production and Value of Texas Upland Cotton, 1971 - 2007



Production and Value of Texas Upland Cottonseed, 1971 - 2007

